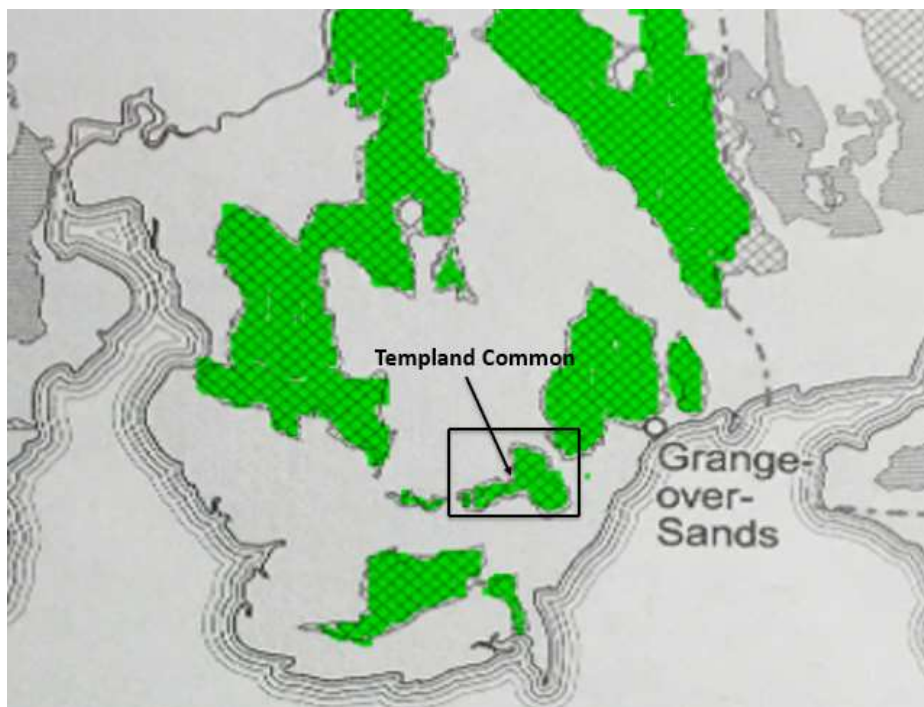


The Enclosure of Templand Common

Phil Rowland

Common Land was owned by the Manor or Community and used by the local farmers for grazing their animals or to dig peat for fuel. Within the Parish of Cartmel, the rights to the Commons were regulated by a local court comprising of 24 sidesmen from Cartmel Priory. By the middle of the 18th century, the Commons became over-grazed, and eventually, following an Act of Parliament in 1796, the Commons Land was enclosed, sponsored by 6 wealthy landowners, and allocated to local landowners or sold by auction.¹ A detailed description of the enclosure of the Commons, Salt Marshes and Wasteland in the Parish of Cartmel is described elsewhere.²

Between 8000 and 9000 acres of Commons Land in the Ancient Parish of Cartmel was enclosed at the end of the 18th Century and is illustrated in a map drawn by Chris Beacock (Fig 1). Templand Common¹ is highlighted in Fig 1.



*Fig. 1. Map drawn by Chris Beacock.*³

Historians are indebted to James Stockdale for recording detailed information in 58 pages of his tome the Annals of Cartmel, extracted from records of his grandfather.¹ Extracts from the Annals appear widely in texts on the subject, for example Ian Whyte's on Transforming Fell & Valley.³ The first task of the process to enclose the Commons involved detailed surveys and the preparation of maps which for the Parish of Cartmel are held in the Kendal Archive. The following research also utilises details from Buttle's valuation book of 1811 (held at the Barrow Archive).⁴

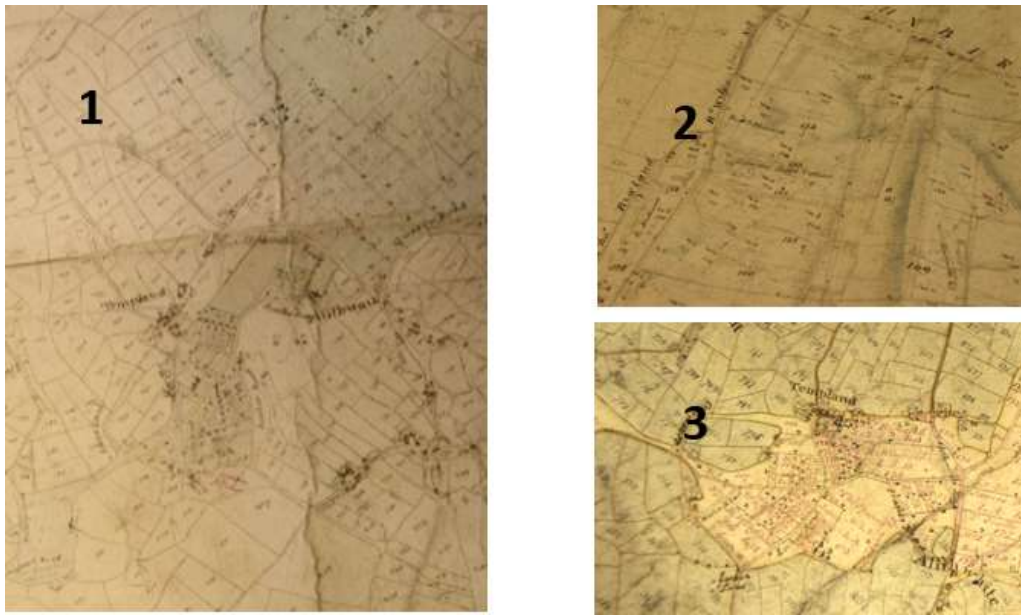


Fig 2. Parts of the three different undated Enclosure maps drawn around 1797-9 around Templand, currently held at the Kendal Archive, show the roads / tracks, buildings and plots.

Templand Common as named by the Enclosure Commissioners and covering 228 acres, is located to the North and East of the ancient hamlet of Allithwaite. The maps (Fig 2) each highlight the Commons land. The information from these maps is overlaid on the 1850 OS map (Fig 3).

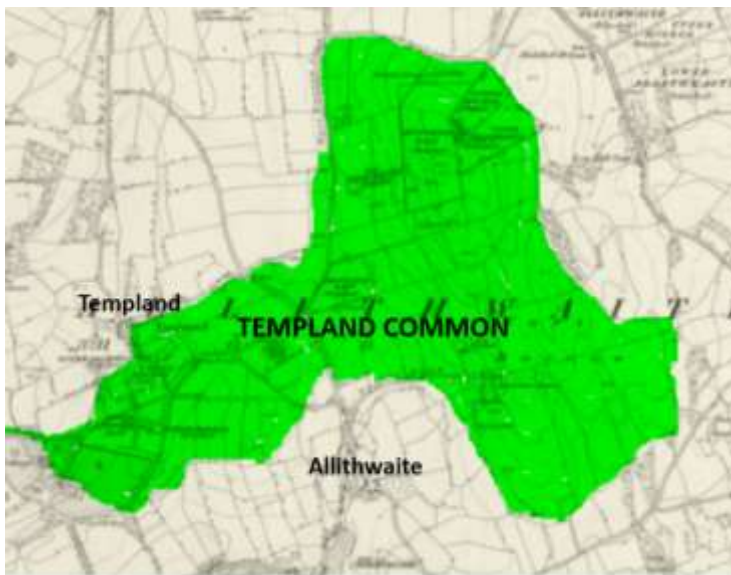


Fig 3. Templand Common (shown in green on 6-inch OS map surveyed 1847-8 and published 1851). Information gathered from the Enclosure maps (shown in Fig 2).

The Cartmel Enclosure Commissioners met at Mrs Hullah's (Cavendish Arms in Cartmel) on 24th August 1796 and appointed J^{no} Gibson to survey the area which included Templand (Annals p330). The surveyor would have completed a survey book listing every field with its owner, occupier, and acreage, plus land occupied by buildings. Only one survey book for Upper Allithwaite that would have accompanied the maps appears to have survived.⁶

Part of the survey map for Templand Common is shown in Fig 4.⁷ The plan contains the survey lines and the initials of the cartographer WE. Allocations to landowners are noted in pencil on the survey map and the other enclosure maps.



Fig 4. Enclosure Survey Map with the survey lines are over-drawn in blue and the road in black.⁸

Stockdale notes show that on July 15th 1799, the Commissioners marked out several allotments on Templand Bank and a year later notice was given on 1st May 1800 that all the commons land in the parish was allocated and staked out, and the owners were required to fence the land within one year.¹ On Templand Common, the 81 new enclosure field plots, in a lighter shade, are numbered and the larger fields annotated with names of the landowners receiving the allocation from the Commissioners (fig 5). The smaller field plots were located to the south-west of the hamlet of Templand (fig 6). The darker shaded area on these figures shows the existing farms / smallholdings and the detailed field layout with numbered field.



Fig 5: Plots allocated to Major landowners highlighted on the enclosure map.⁹

The local land tax from the allocated plots on Templand Common were to the Lower Allithwaite township in the Parish of Cartmel. To ensure equality across the parish, some of the Templand Common plots were allocate to other townships. The annotations in red (Fig 5) on the NE edge of the Common show 3 plots associated with Broughton East, Upper Allithwaite and Upper Holker.



Fig 6: Enlarged enclosure map showing the smaller plots to the south of Templand.⁹



*Fig 7. Part of Enclosure map*¹⁰

Two other features on the map (fig 7) are note-worthy: 1) there are 13 buildings shown for the hamlet of Templand, and 2) the names of owners of land adjacent to the Common, i.e., Hodgson, Myles Walker Hall, Knowls, M Knowles John Bigland, Thomas Bigland and Charles Sill.

Table 1 shows the landowners from annotations on the plans shown in Figs 4 & 5. From this information, the allocations, (acres shown in brackets), indicate that the main landowners in the locality were Eric Rigg (29), Thomas Askew (24 - Birkby), John Seatle (20), John Carter (19 - the Sands guide) Richard Winfield (15 - Outerthwaite) and John Wainhouse (15). All but two plots were allocated to the landowners and based on their current rights. These two plots including Little Templand were sold at auction to Richard Winfield. The Little Templand land was subsequently bequeathed by his granddaughter Mary Lambert on her death in 1857 for the Church, School and Vicarage.

The other very important feature of the Enclosure Commissioners work was to specify the roads across the former commons land, which over 200 years on still form the main routes in the village of Allithwaite. They designation public roads that they commissioned and private roads that were funded from surplus money and by agreement of the parishioners at vestry meetings. The public road they constructed was from Templand Lane over Templand Bank southwards to Allithwaite which they called Allithwaite Road. The nine private roads were specified to be between 15 and 20 feet wide (Fig 8).

- 30.—Another private carriage and driftway of the breadth of 18ft., from the said Green Road, eastwards over the Green Common, Riding Brow, and Templand Bank, to a public carriage road which we call the Allithwaite Road, and which said private carriage and driftway, we call "Templand Road."
- 31.—Another private carriage and driftway of the breadth of 15ft., from the said Templand Road, northwards over an allotment made to Robert Newby, to an ancient lane leading to Birkby Hall.
- 32.—Another private carriage and driftway of the breadth of 15ft., from the said Templand Road, northwards to ancient enclosures of Thomas Askew.
- 33.—Another private carriage and driftway of the breadth of 15ft., from the said Templand Road, southwards to a watering place near the homestead of Isabella Sawrey, which we call the "Watering Road."

- 34.—Another private carriage, drift, and bridleway, of the breadth of 18ft., from — Lane, southwards over Templand Bank to Locker Lane, which we call "Locker Road."
- 35.—Another private carriage and driftway of the breadth of 18ft. from the said Templand Road, eastwards over Templand Common, to ancient enclosure of James Brothwaite and Margaret Seath, to the said Allithwaite Road.
- 36.—Another private carriage road from the said Locker Lane, eastwards over an allotment made to Matthew Knowles, to an allotment made to John Bigland.
- 37.—Another private carriage and driftway of the breadth of 18ft., from the said Allithwaite road, eastwards to a public Stone Quarry, and which we call the "Quarry Road."
- 38.—Another private carriage and driftway of the breadth of 20ft., from the said Allithwaite Road, northwards over Under Wartbarrow, to an allotment made to Mr. John Helm and Alice Wainhouse, and thence northwards and eastwards, over the said allotment to an ancient lane called Between Garths, and thence to the public carriage road called "Fell Gate Road."

Fig 8. Specification of private roads copied from *Annals of Cartmel*.¹

The Commissioners also named the roads (see Fig 9a). Watering Road provided access to a reliable water source at Boarbank Cottage; Askew Road, an access road to the Birkby land from Templand Road, is today in an unmade and dilapidated state. Davis Road along the edge of the Common no longer exists. You will notice that all the designated names are different today (Fig 9b) (Seatles Road is now Vicarage Lane, Birch Road is now Wartbarrow Lane, Locker Road now Locker Lane etc).

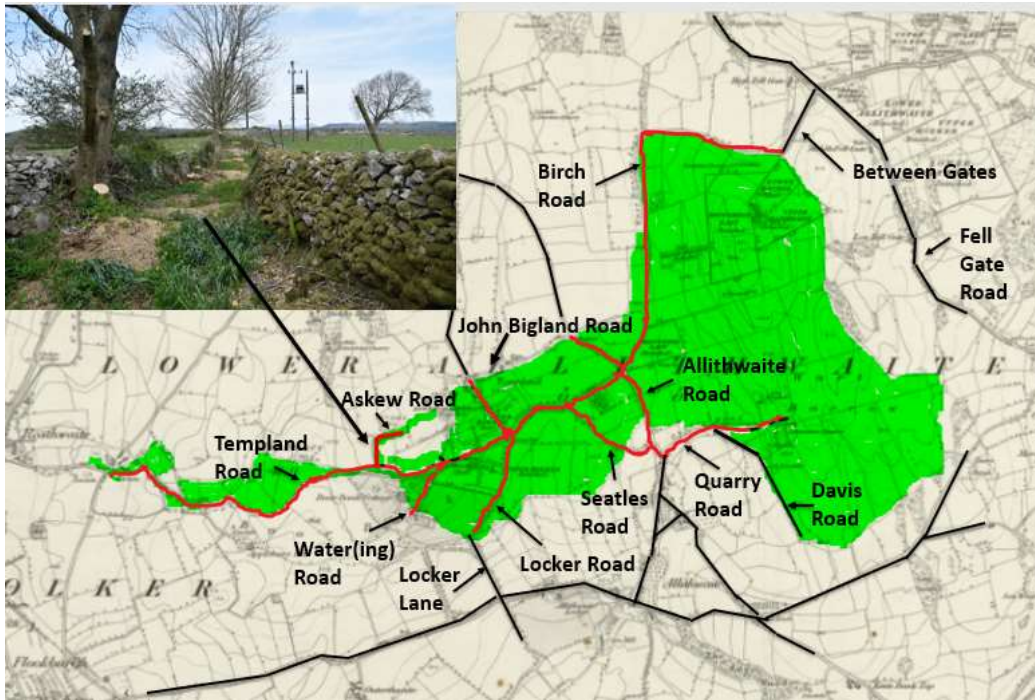


Fig 9a. Roads named by the Enclosure Commissioners, or noted on the Enclosure map, plotted on the 1851 OS map. Red lines indicate specified roads across Common Land.

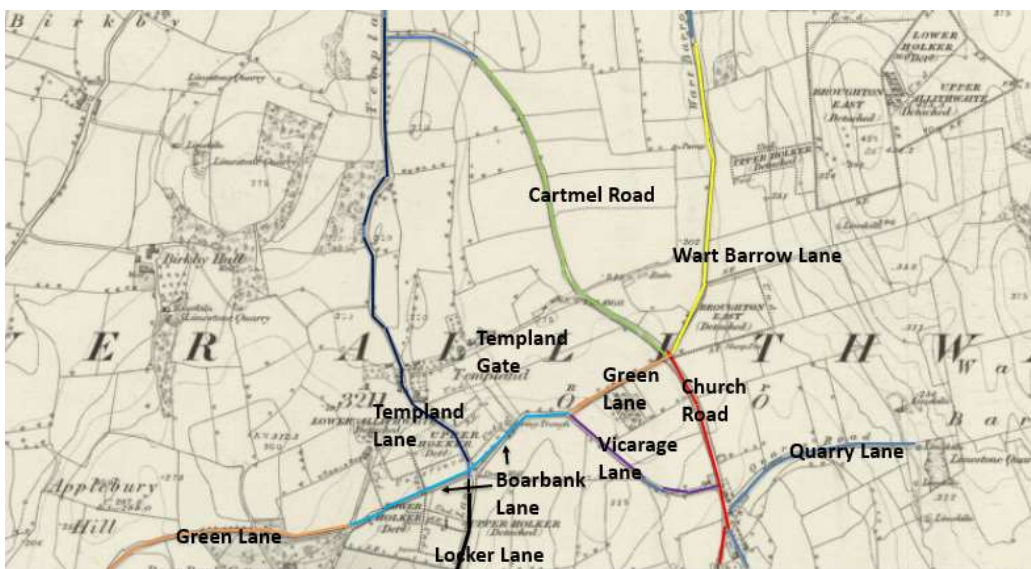


Fig 9b. Present-day road names plotted on the 1851 OS map.

Allithwaite Quarry

- WPR 89/Z3 CARTMEL AWARD ENCLOSURE ACT 1807 (Kendal Record Office)
- P.73
- *...and next to the allotments and parcels of ground necessary to be set out upon the said several commons waste grounds and mosse for getting stone and gravel by the owners and proprietors...for buildings, burning into lime and for repairing the ways and roads within the said parish of Cartmel. We the said William Dawson, William Whitelock and Robert Waddington do allot and set apart a parcel of ground on Wartbarrow containing in statute enclosure 2 roods and 2 perches bounded on the east by allotments being severally awarded to John Wainhouse and John Harrison.*

Fig 10. Allithwaite Quarry Enclosure Act.¹¹

An additional Enclosure Award Act in 1807, allowed the owners of the Commons plots to take stone for buildings, burning into lime and for repairing roads. (Fig 10). Three limekilns were constructed adjacent to the Quarry to prepare lime for land improvement (Fig 11). There was also a quarry and limekiln near the northern perimeter of the former Common Land, the quarry still evident today.



Fig 11. 1851 OS map shows three lime kilns adjacent to Allithwaite Quarry.

Following completion of the enclosure work, a revaluation of land tax for the parish was undertaken when the enclosure process was completed and is recorded in Buttle's valuation book. A comparison of the owners in 1800 derived from the maps and the owners recorded in Buttle's valuation book in 1811, indicates that only 42% of the land in 1800 remained in the same ownership in 1811. Some of the smaller plots are not listed in 1811, indicating these were soon sold on and consolidated into other nearby farms. Table 2 shows that four landowners, namely Hutchinson, Hodgson, Brockbank and Nicholas Harrison, became the owners of the 21 small plots in the intervening 11 years. Smallholders, who were opposed to the enclosure of the Common Lands, received only tiny allocations of common land and their smallholdings were quickly subsumed into the local, larger, more successful farms.

Present Day: More than 200 years has passed since Templand Common was enclosed. Some of it has been developed, for example the land extending from St Mary's Church northwards to Templand Park, Green Lane and Wartbarrow Lane.

What is surprising is that one of the allocated plots adjacent and to the south of Templand and some of the boundary walls survive in-tact (Fig 12).



Fig. 12. 1851 OS maps showing present-day enclosure features.



Fig. 13. Illustration showing the absence of present-day field boundaries.

Today, most of the field boundaries have disappeared although there are traces of some wall foundations and lines of mature trees of former field boundaries are visible on Wartbarrow. (Fig 13).

Table 1: Owner Allocations (and purchases). Names noted from the Enclosure maps.

Enclosure Allocation	Field no	Enclosure Allocation	Field no
Poor of Lower Allithwaite	73	Penny, Myles	122
Whinfield, Richard, Esq	74	Knowls, Miles	123 a
Flookburgh Chapel	75	Knowles, John	123
<i>unreadable</i>	76	Fell, Rodger	124
<i>unreadable</i>	77	Bigland, John	125
<i>unreadable</i>	78	Whinfield, Richard, Esq	126
<i>unreadable</i>	79	Bigland, John	127
<i>unreadable</i>	80	<i>missing</i>	128
<i>unreadable</i>	81	<i>missing</i>	129
Hadwen, William (John erased)	82	Sill, Charles	130
Spence, Thomas	83	Scrogam, J	131
Moss, James	84	Bigland, Thomas	132
Hutchinson, Robert	85	Wilson, Richard	133
Newby,	86	Bigland, Thomas	134
Hutchinson, Robert	87	Askew, Thomas	135 a
Birkett, John	88	Askew, Thomas	135 b
Cowperthwaite, Edward	89	Askew, Thomas	135
Coalbank, Thomas	90	Braithwaite, James	136 a
<i>unreadable</i>	91	Braithwaite, James	136
Allinson, Thomas	92	Seattle, Turner	137
Harrison, Nicholas	93	Bigland, M & E	138
Garner, Thomas	94	Mayfair, Abraham	139
Sawrey, Isabella	95	Davis, Jos	140
Whinfield, Richard, Esq	96	<i>missing</i>	141 a
<i>missing</i>	97	<i>missing</i>	141
<i>missing</i>	106	Stone Quarry	142
Hodgson, William	107	Seattle, Heirs of John	143
Barrow, John	108	Carter, Devises of John	144
Barrow, Richard	109	Guide over Sands	145
Hodgson, William	110	Wainhouse, John	146
Hall, M Walker, Esq	111	Court, Thomas & Newby, John	147
Bradley, Thomas	112	<i>missing</i>	148
Askew, Robert	113	Carter, Heirs of William	149
Barwick, Mary	114	<i>missing</i>	150
Bagot, Revd	115	<i>missing</i>	151
<i>unreadable</i>	116	<i>missing</i>	152
Taylor, Alice	117	Rigg, Edward & Others	153
Taylor, William	118	Brockbank, John	154
Roper, Mary	119	Helm, John	155
<i>unreadable</i>	120	<i>missing</i>	156 a
Knowls, Matthew	121		

Table 2. A List of the Small Plot Landowners in 1800 and 1811.

Plot	1800 Ownership	1811 Ownership
85	Hutchinson, Robert	Hutchinson, Robert
86	Newby,	Hutchinson, Robert
87	Hutchinson, Robert	<i>Missing</i>
88	Birkett, John	Hutchinson, Robert
89	Cowperthwaite, Edward	Harrison, Nicholas
90	Coalbank, Thomas	Harrison, Nicholas
91	<i>unreadable</i>	<i>Missing</i>
108	John Barrow	<i>Missing</i>
109	Richard Barrow	William Hodgson
110	Wm Hodgson	William Hodgson
112	Thomas Bradley	<i>Missing</i>
113	Robt Askew	<i>Missing</i>
114	Mary Barwick	William Brockbank
115	Revd Bagot's	William Hodgson
116	<i>Unreadable</i>	<i>Missing</i>
117	Alice Taylor	<i>Missing</i>
118	Wm Taylor	<i>Missing</i>
119	Mary Roper	<i>Missing</i>
120	<i>Unreadable</i>	<i>Missing</i>
121	Matthew Knowls	William Brockbank
122	Myles Penny	<i>Missing</i>

¹ J Stockdale. *Annals of Cartmel*

² <https://cplhs.files.wordpress.com/2020/05/common-enclosure-in-cartmel-parish.pdf>

³ Ian Whyte. *Transforming Fell and Valley: Landscape & Parliamentary Enclosure in North-West England*. 2003. CNRS Univ. Lancaster.

⁴ Cumbria Archive BDX 734 A survey and valuation of Cartmel by Thomas Buttle of Kirkby Lonsdale, land surveyor and commissioner copied by Captain Swainson

⁵ 1: WPR 89/3/2/28, 2: WPR 89/3/2/29, 3: WPR 89/3/2/23

⁶ WPR 89/14/1/1 Parish of Cartmel, William Johnson's index of enclosure awards, part 1-1308

⁷ Cumbria Archive description is of a plan covering Part of Cartmel Fell showing Birkby Hall. On examination the plan clearly covers Allithwaite, Templand, Wartbarrow, The Green and Birkby. The section featured here is the NE section of Templand Commons Land.

⁸ WPR 89/3/2/29. Alternative reference PR/2716/20.

⁹ WPR 89/3/2/23 Alternative Reference PR/2716/15

¹⁰ WPR 89/3/2/28

¹¹ WPR 89/Z3